



PROJECT STUDY

IPG

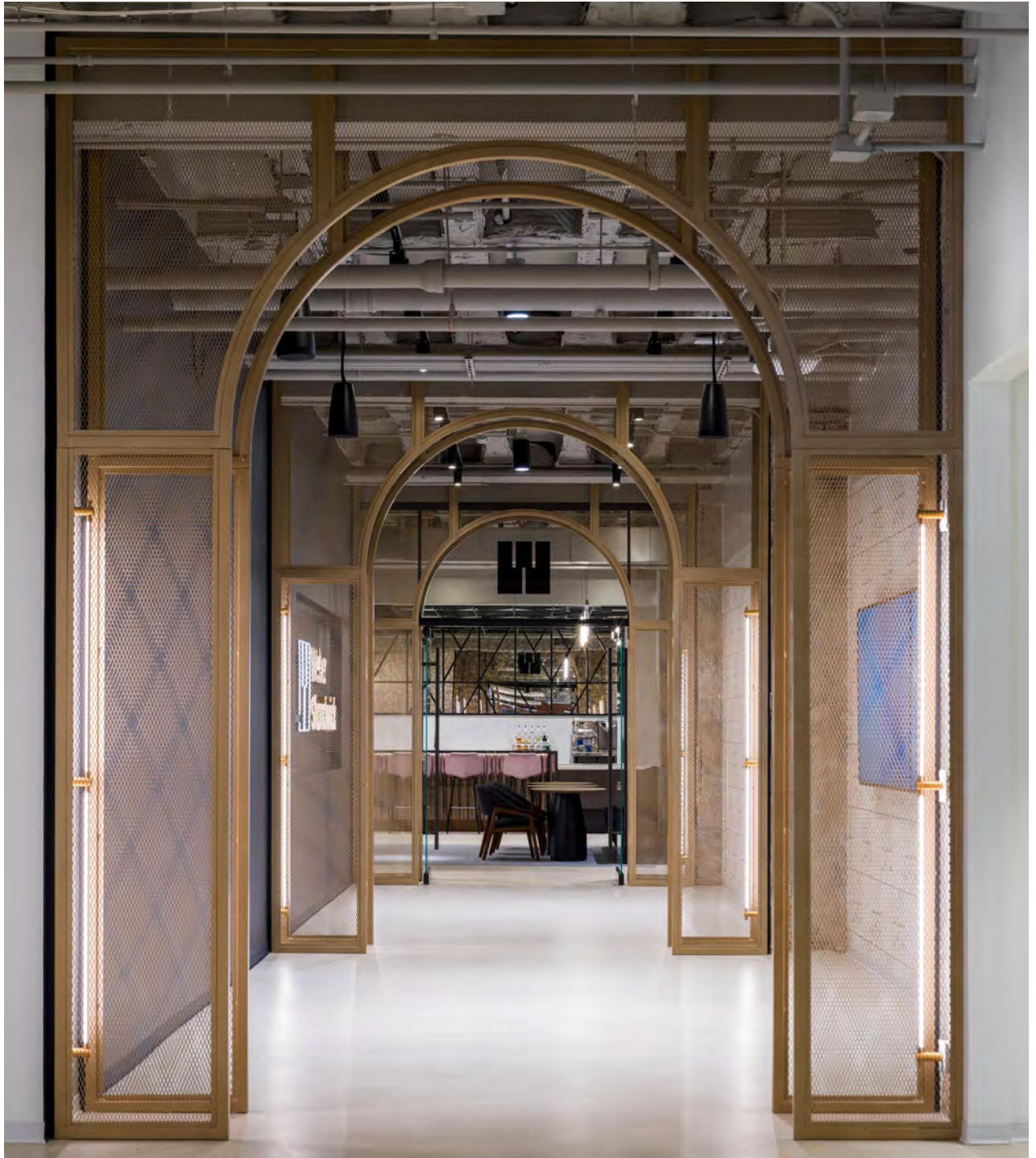
Located in the historic Merchandise Mart in Chicago, **InterPublic Group**, a leader in advertising, joined two of their companies into one collaborative workspace.

Icon Modern partnered with the design firm, local millworker and general contractor to provide custom decorative metal elements throughout.

With over a decade in metal fabrication, Icon Modern provided the engineering expertise required for these large-scale elements and worked with all teams involved to make the project a success.

- **Timeline:** 12 weeks from production to install
- **Products:** space dividers, ceiling element, railings and covers
- **Services:** fully-engineered shop and install drawings, sample matching, on-site visits, production oversight
- All products were fabricated in Illinois

Design: TPG Architecture
Millworker: W.M. Huber Cabinet Works Inc.
General Contractor: BIG Construction, LLC
Photography: ©Tom Sibley Photography
Summer, 2024



BEHIND THE PROJECT

IPG



Bar Screen: 1" x 1" steel tube in custom patterned design + black powdercoat finish

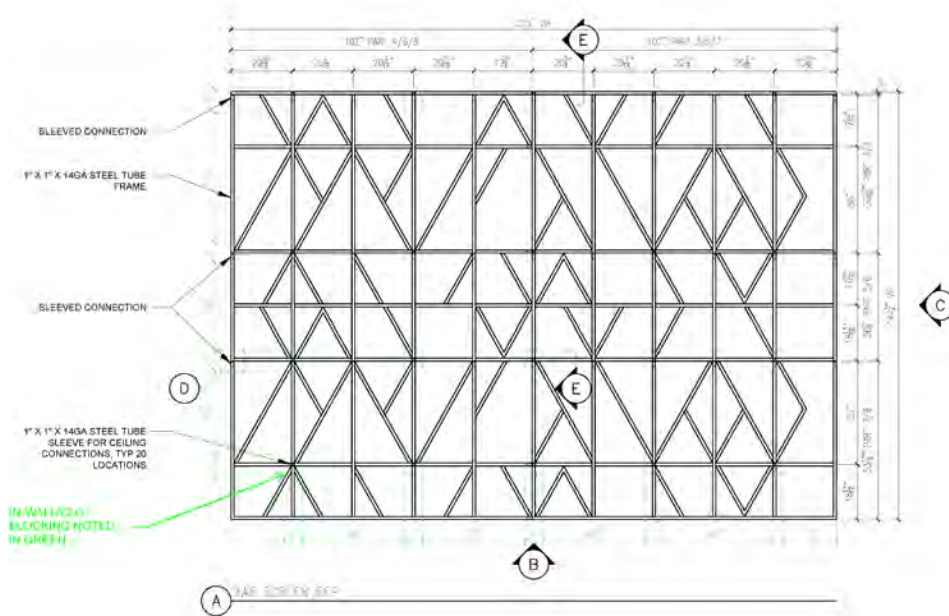
BEHIND THE PROJECT

IPG

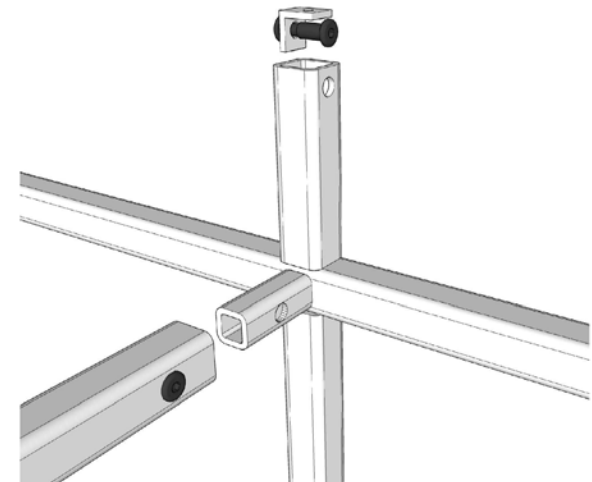
- **Element:** Bar Screen
- **Size:** 205"L x 1"W x 144"H/54"H
- **Materials:** 1" x 1" 14GA steel tube, matte black powdercoat finish
- Fabricated in sections, sleeved & bolted connections
- Sleeved connections to wall and ceiling
- Blocking by GC, installed by millworker



Fabrication



Shop Drawing: RCP with blocking notes



H CONNECTION DETAIL

Shop Drawing: Detail, sleeved and bolted connections

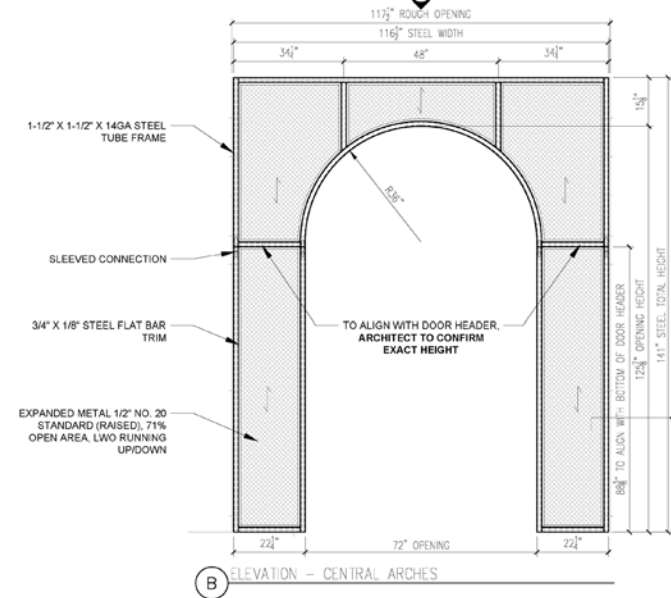


Metal Arched Dividers: 1 1/2" x 1 1/2" steel tube frame + expanded metal 1/2" #20 infill panel + custom brass powdercoat finish

BEHIND THE PROJECT

IPG

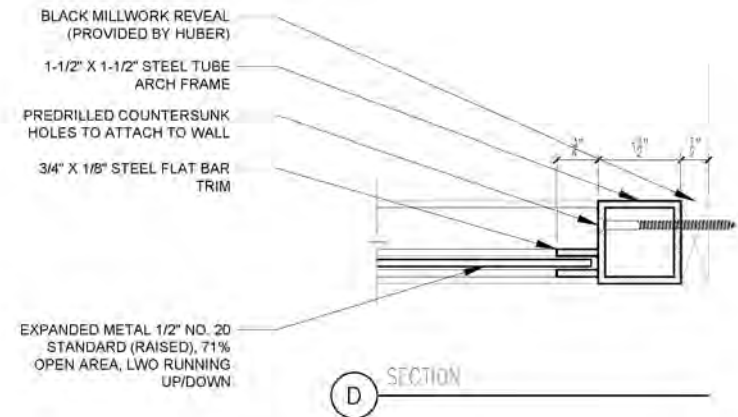
- **Element:** Metal Arched Dividers
- **Quantity:** 6
- **Size:** 117 1/2"L x 1 1/2"W x 141"H, 39" radius
- **Materials:** 1 1/2" x 1 1/2" 14GA steel tube, 1/2" #20 expanded metal infill, 3/4" x 1/8" flat bar trim, custom bronze color powdercoat
- Mechanical connection to adjacent walls
- Blocking by GC, installed by millworker



Shop Drawing: Elevation



Fabrication



Shop Drawing: Section

BEHIND THE PROJECT

IPG

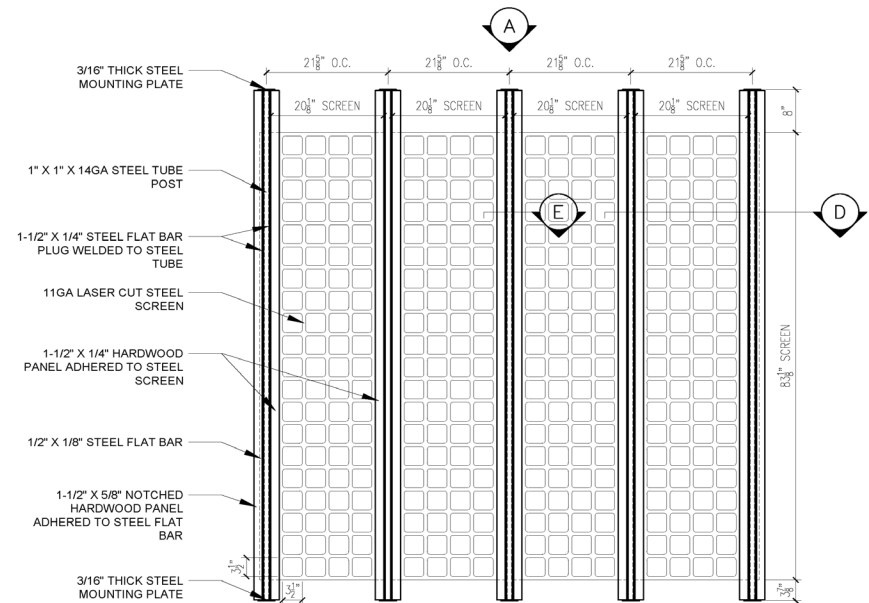


Space Divider: 1" x 1" 14GA steel tube + 11GA laser cut screen in grid pattern + matte black powdercoat finish + flat bar trim + wood trim (base cabinet by others)

BEHIND THE PROJECT

IPG

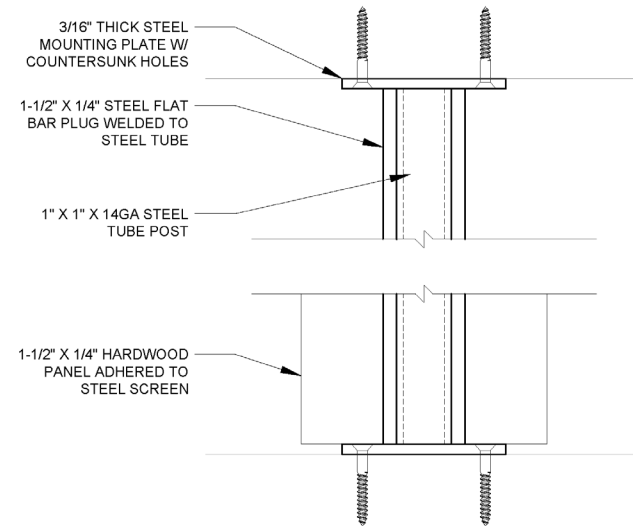
- **Element:** Space Divider
- **Quantity:** 1
- **Size:** 91"L x 1 1/2"W x 95"H
- **Materials:** 1"x 1" 14GA steel tube, 11GA laser cut steel, 1 1/2" x 1/4" flat bar trim, 3/16" thick steel mounting plates, matte black powdercoat finish, wood trim
- Fabricated in multiple parts with sleeved connections and mounting plates for base and ceiling
- Blocking by GC, installed by millworker



Shop Drawing: Elevation



Fabrication



F DETAIL

Shop Drawing: Detail, base + ceiling attachments